

ADAMERA MINERALS CORP

FOCUSED ON DISCOVERY

Q1 2022

Q2 2023

TSX-V: ADZ OTC: DDNFF

Forward Looking Statement

Information in this presentation may be forward looking. Forward looking information is subject to known and unknown risks, uncertainties and other factors, including potentially inaccurate assumptions, which may cause the actual results, performance or achievements to be materially different from the future results, performance or achievements expected or implied by the forward looking information which speaks only as of the date of this presentation. No invitation to purchase securities is being made. Project QP's are listed in the news release on the company's website. For more detailed information about the Company, please see our Annual Information form, Financial Statements, and other materials available from www.sedar.com

View from Buckhorn 2.0 project to the Buckhorn Mine



ADAMERA MINERALS

BUCKHORN 2.0 GOLD PROJECT

NEW GOLD ZONE AT VTEM 1

700 METRES FROM BUCKHORN MINE

LAMEFOOT SOUTH GOLD PROJECT

RECENTLY DISCOVERED HIGH-GRADE GOLD

SOUTH HEDLEY PROJECT - CANADA

NEW TARGETS DEVELOPING



TARGETING
HIGH-GRADE GOLD

PROPERTIES NEAR PAST PRODUCERS

LOWER RISK BROWNFIELD EXPLORATION

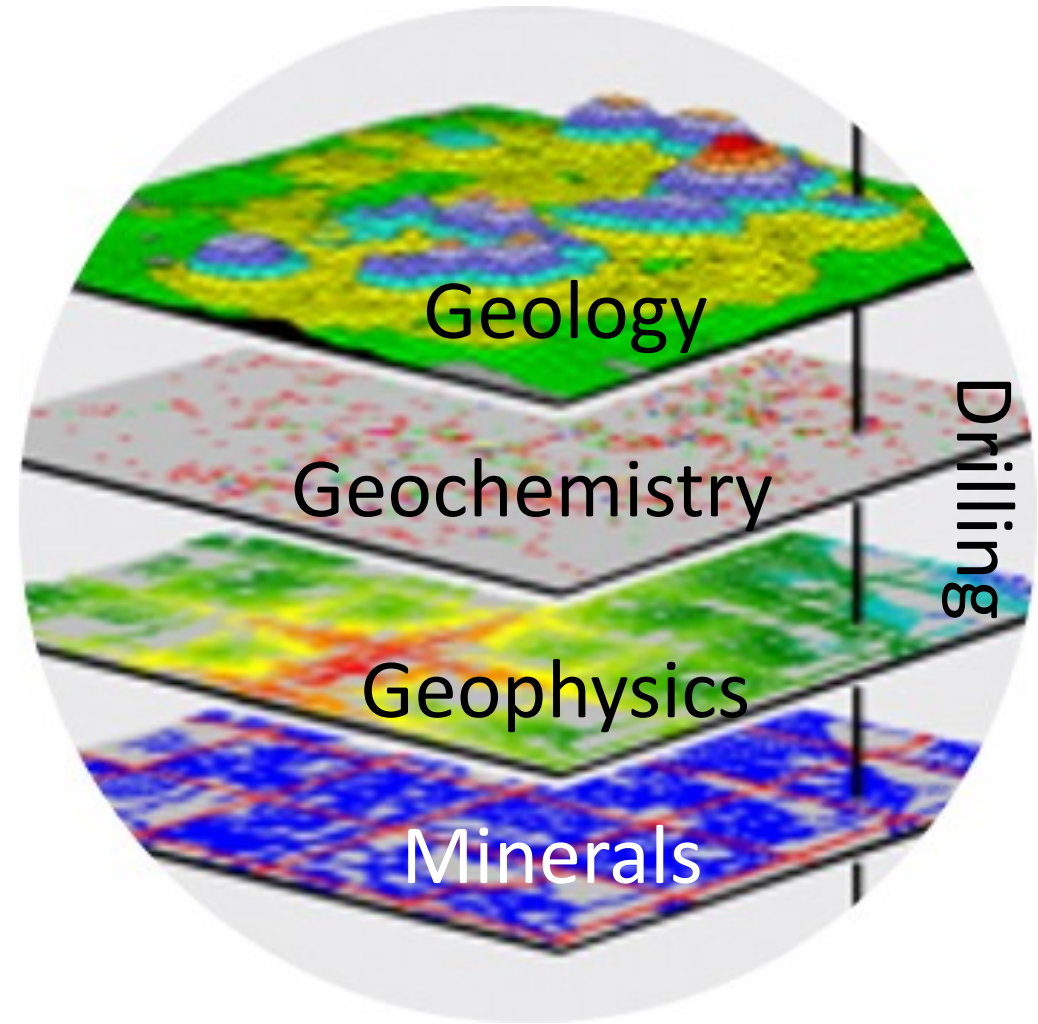


EXPLORING IN THE SHADOW
OF A HEADFRAME

TARGETING
HIGH-GRADE GOLD

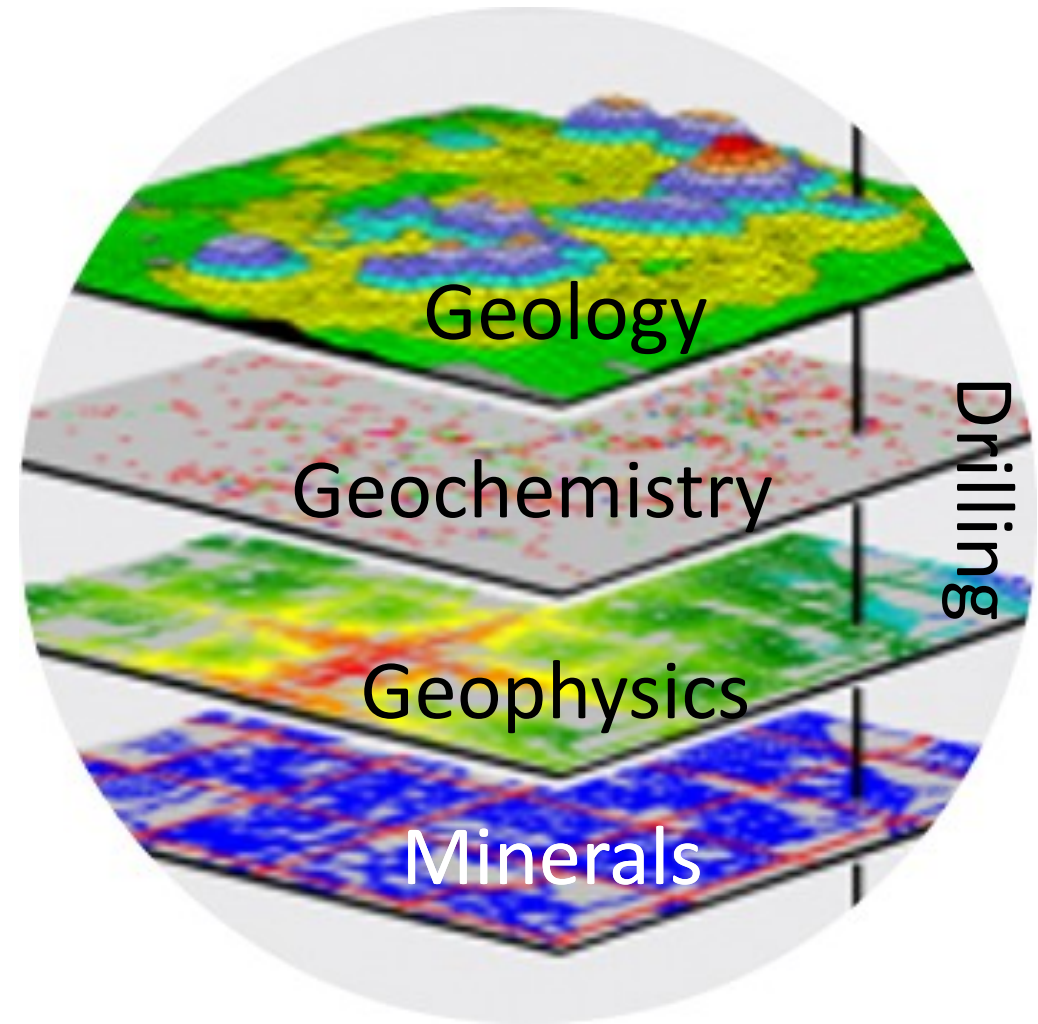
HIGH RESOLUTION SURVEYS
TO FIND UNEXPOSED MINERALIZATION

NEW METHODS TO FIND WHAT WAS MISSED



RESULTS FOR 2022 HIGH-GRADE GOLD

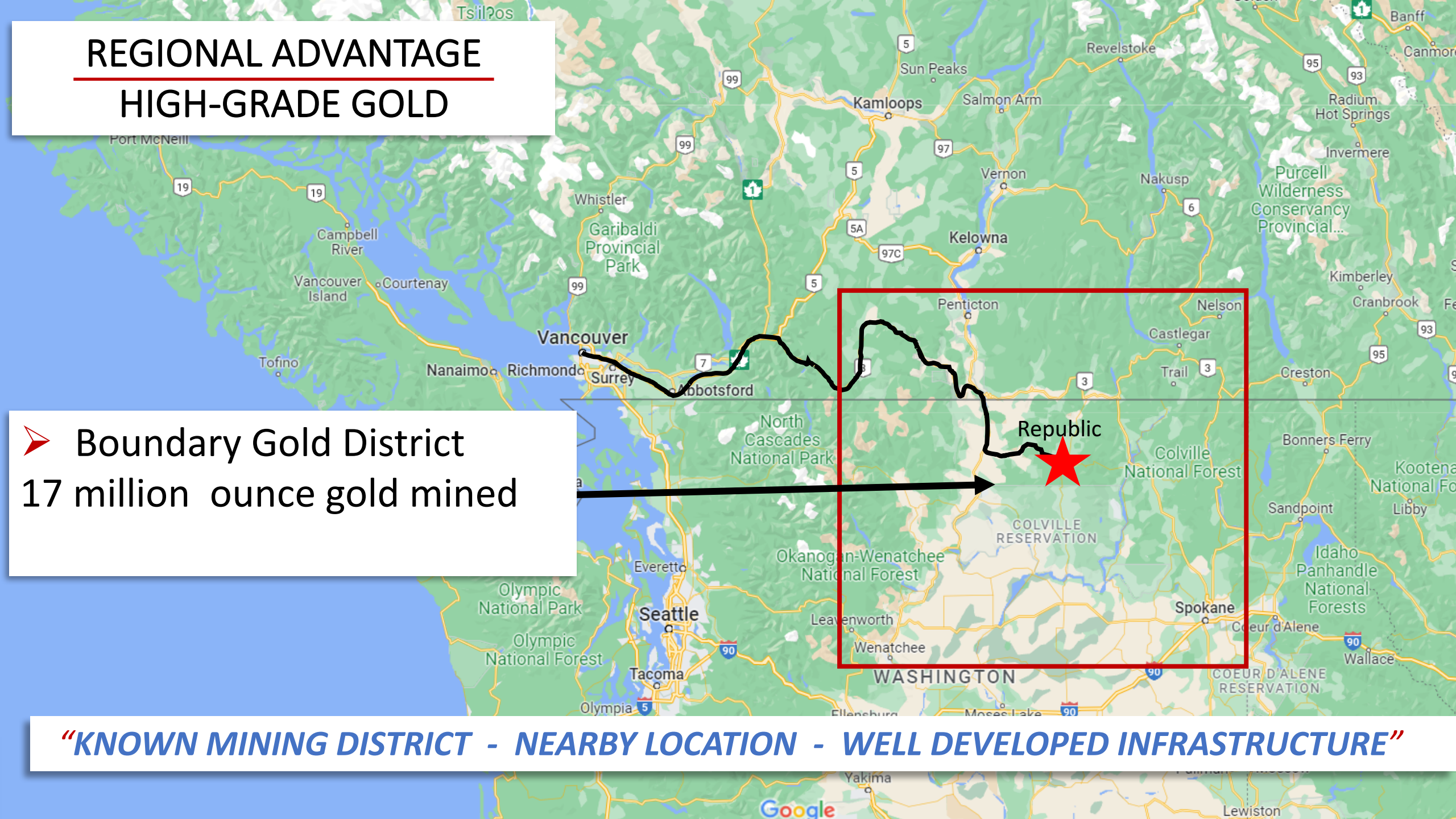
- NEW DISCOVERY AT LAMEFOOT SOUTH
- NEW HIGH-GRADE AT BUCKHORN 2.0
- NEW TARGETS AT SOUTH HEDLEY, BC



REGIONAL ADVANTAGE HIGH-GRADE GOLD

➤ Boundary Gold District
17 million ounce gold mined

“KNOWN MINING DISTRICT - NEARBY LOCATION - WELL DEVELOPED INFRASTRUCTURE”

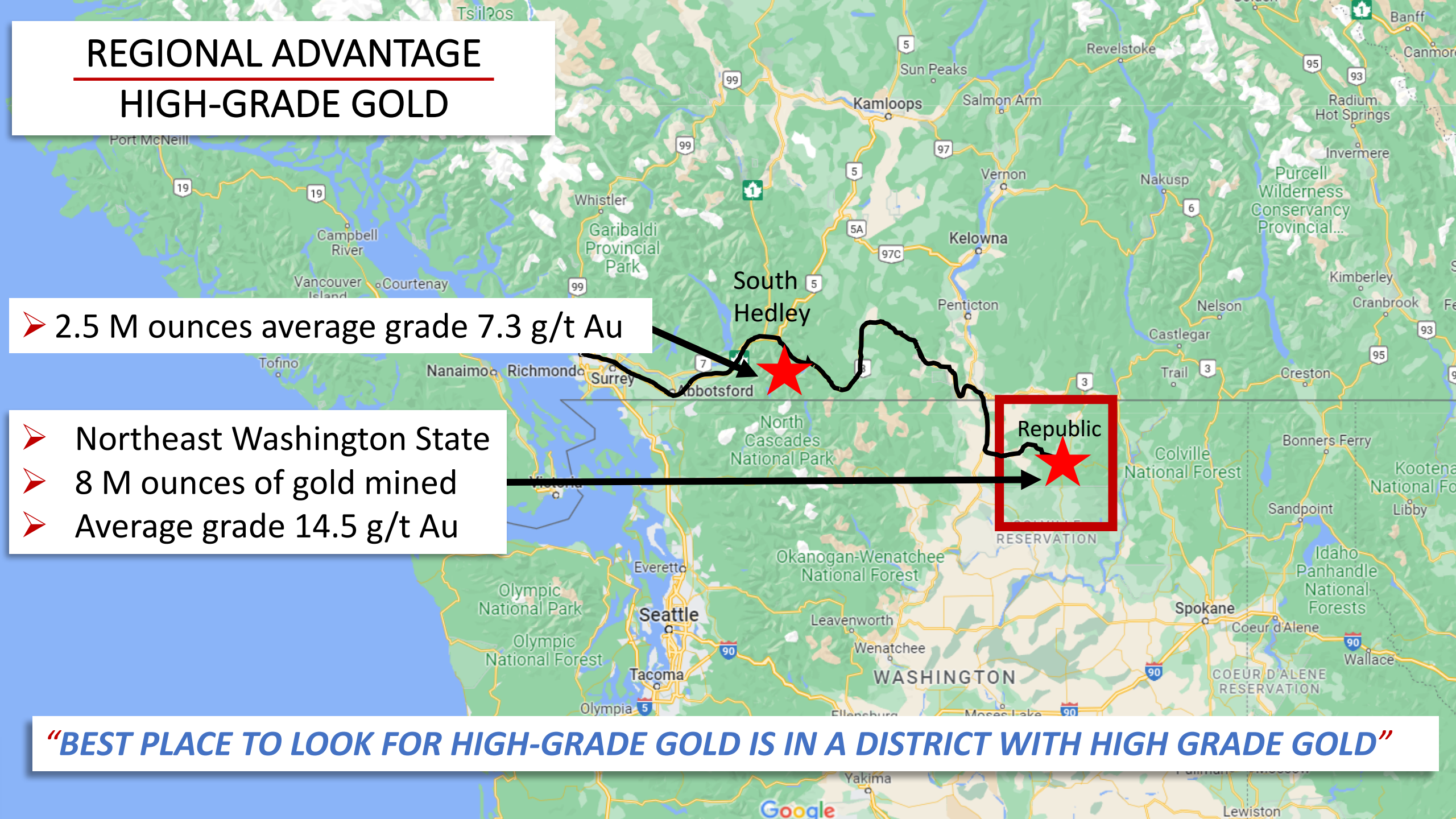


REGIONAL ADVANTAGE HIGH-GRADE GOLD

➤ 2.5 M ounces average grade 7.3 g/t Au

- Northeast Washington State
- 8 M ounces of gold mined
- Average grade 14.5 g/t Au

“BEST PLACE TO LOOK FOR HIGH-GRADE GOLD IS IN A DISTRICT WITH HIGH GRADE GOLD”



WASHINGTON PROPERTIES

PROXIMAL TO MINES

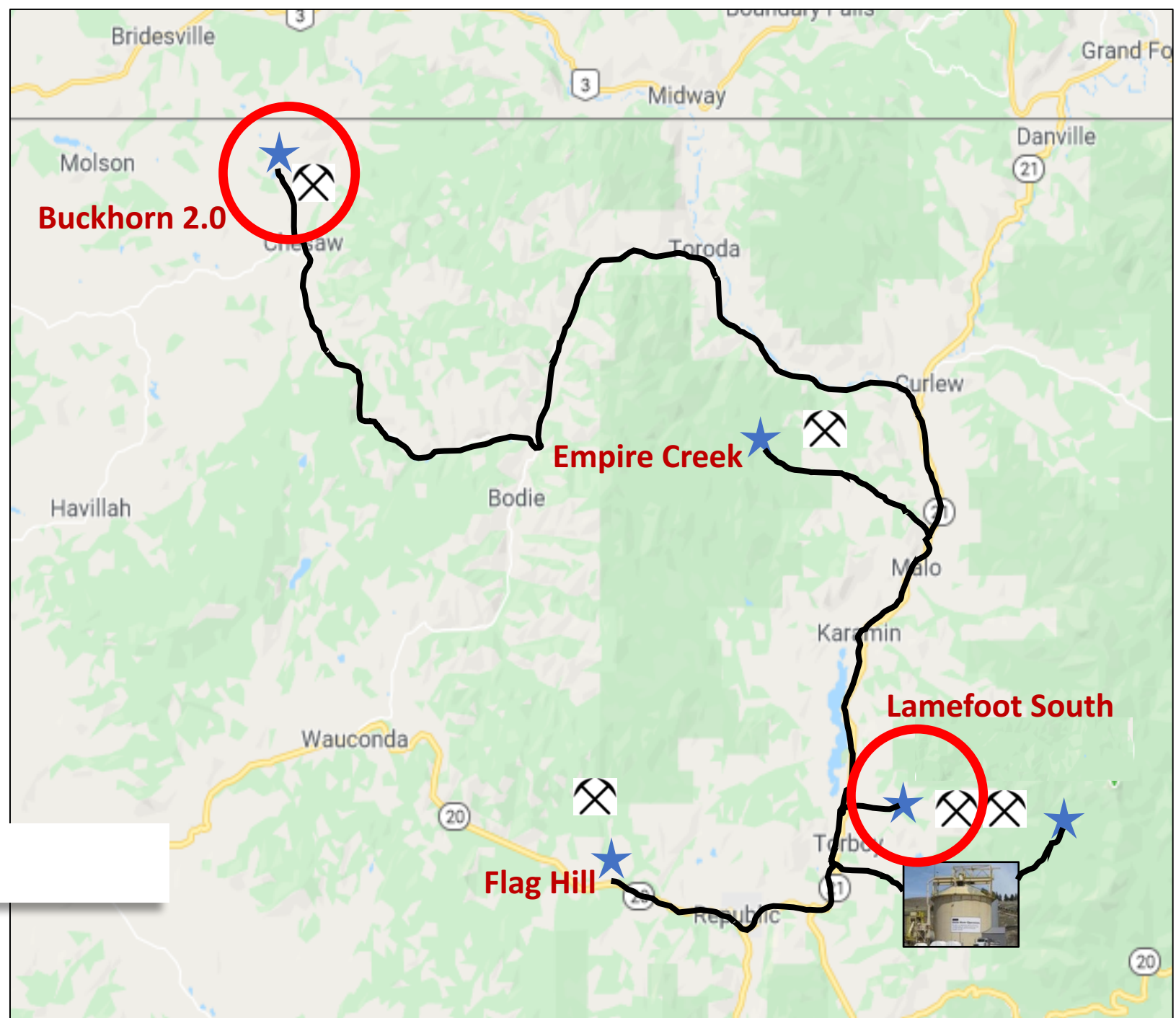


“THE BEST PLACE TO LOOK FOR A MINE IS NEXT TO A MINE”

NEARBY MILL ROAD ACCESS

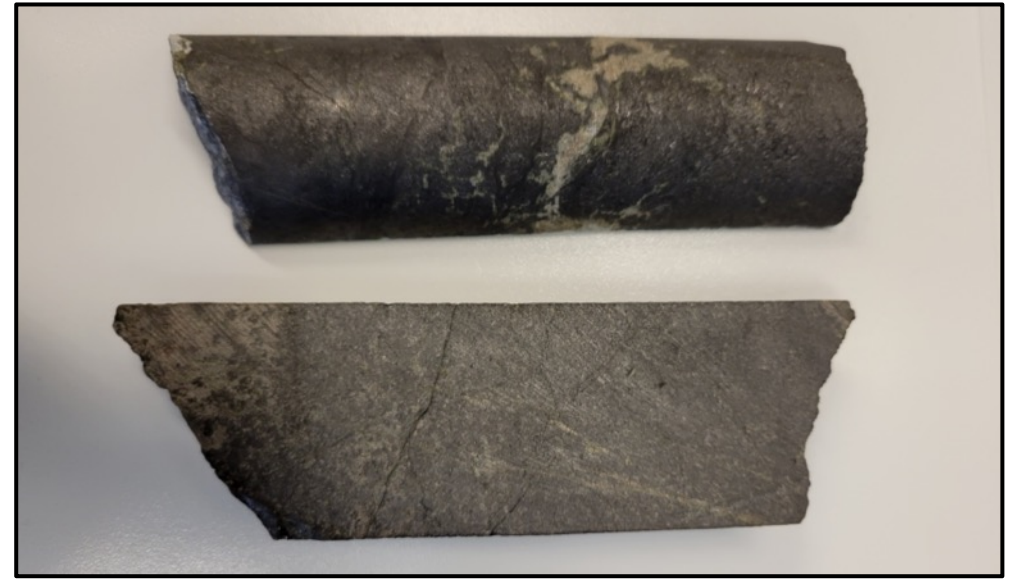
- 2000 TON/DAY MILL
- DISTANCE FROM MILL 5 TO 80 KM

“ALL ROADS LEAD TO A MILL”

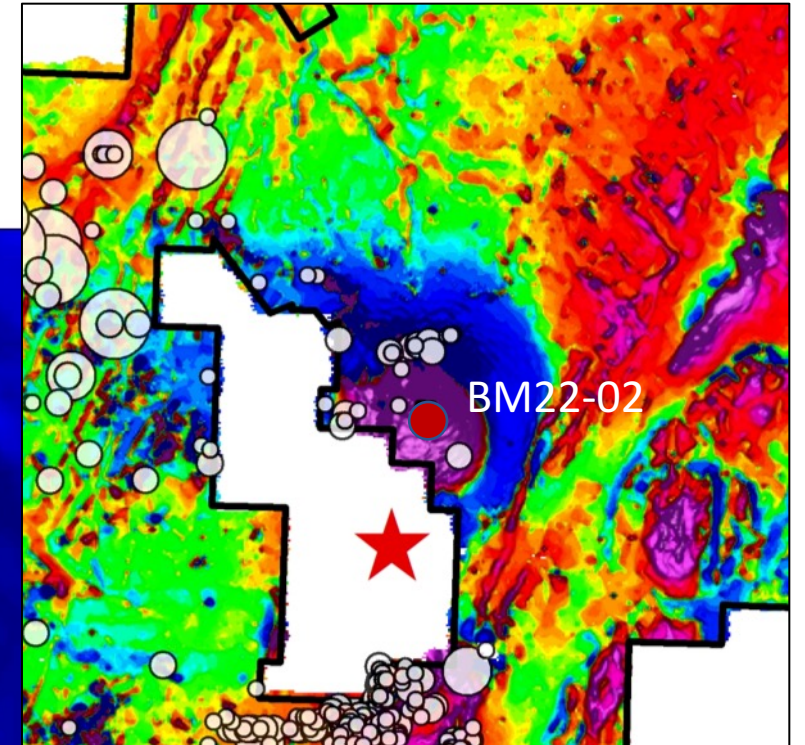
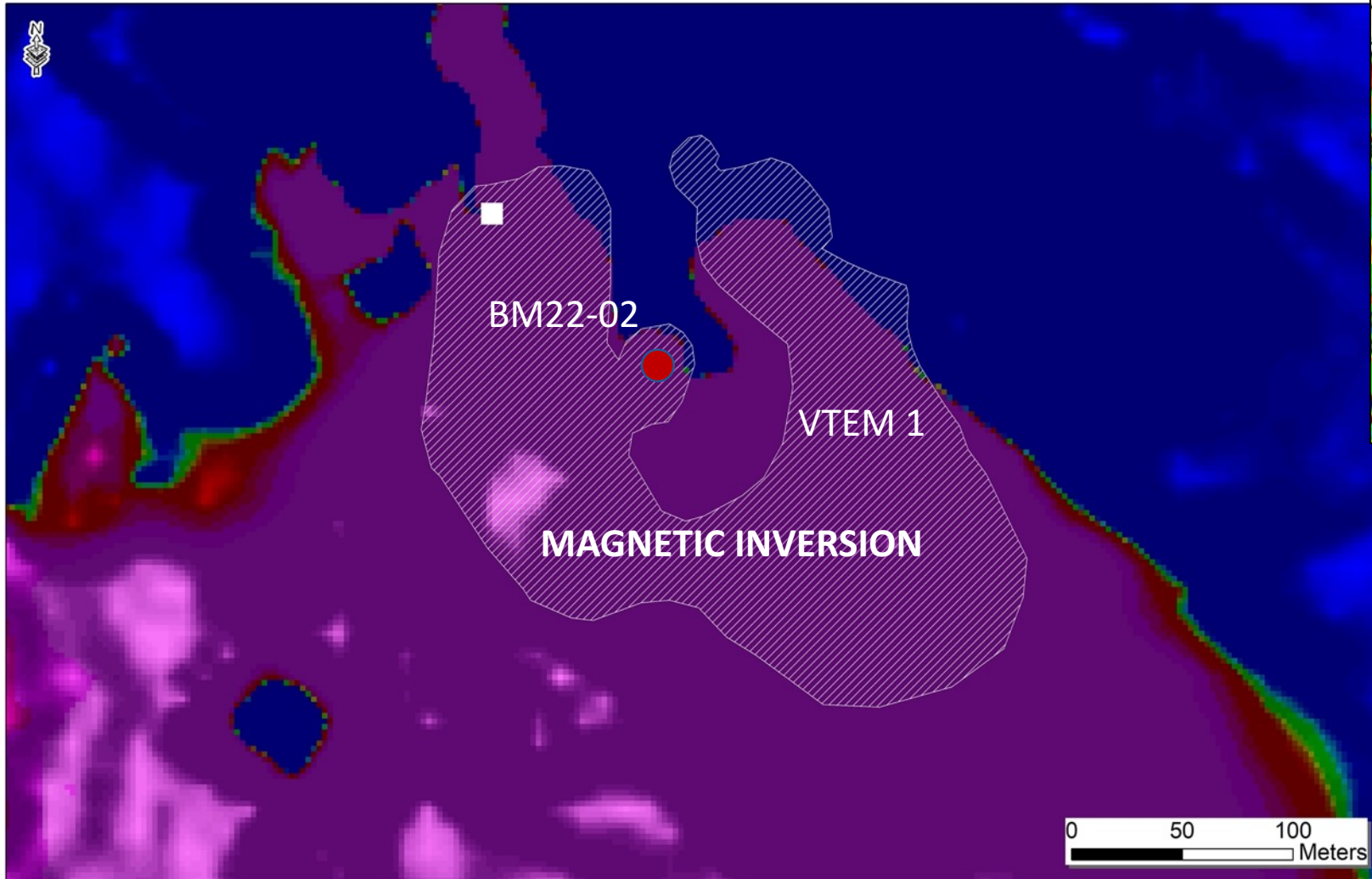


BUCKHORN 2.0

- NEW HIGH-GRADE ZONE DISCOVERED
- 700 METRES FROM BUCKHORN MINE
- REQUIRES FOLLOW UP DRILLING



VTEM 1 New Zone



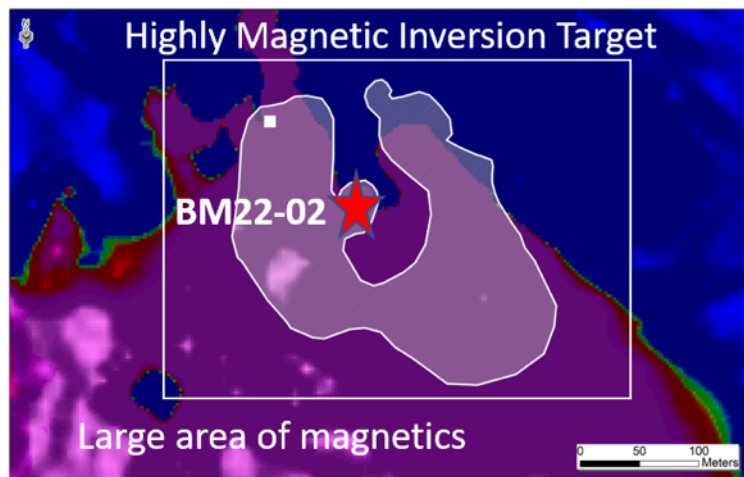
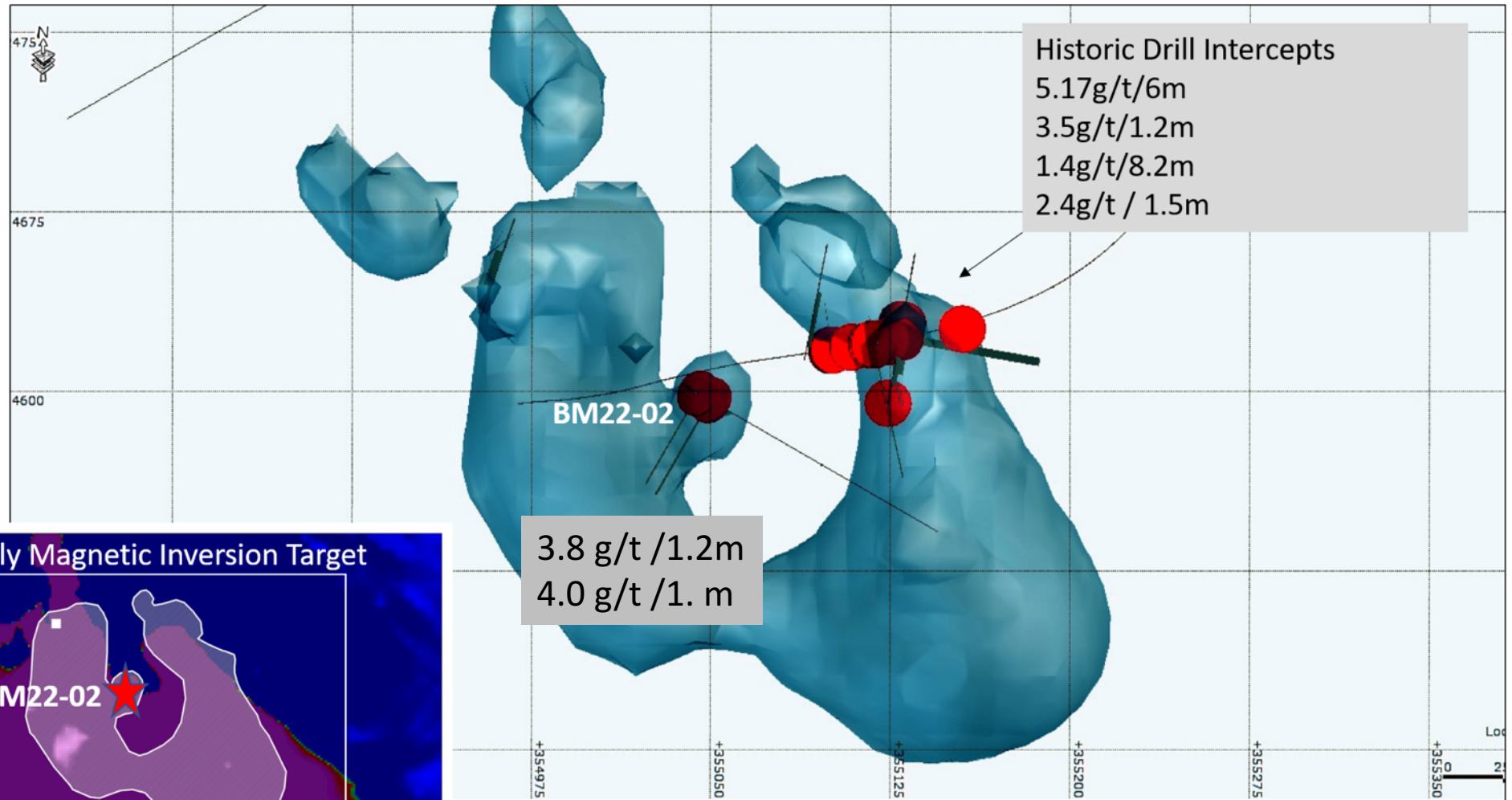
Recent inversion of magnetic data has identified A more discreet target with A highly magnetic response

VTEM 1 TARGET

BM 22-02

Historic drill intercepts

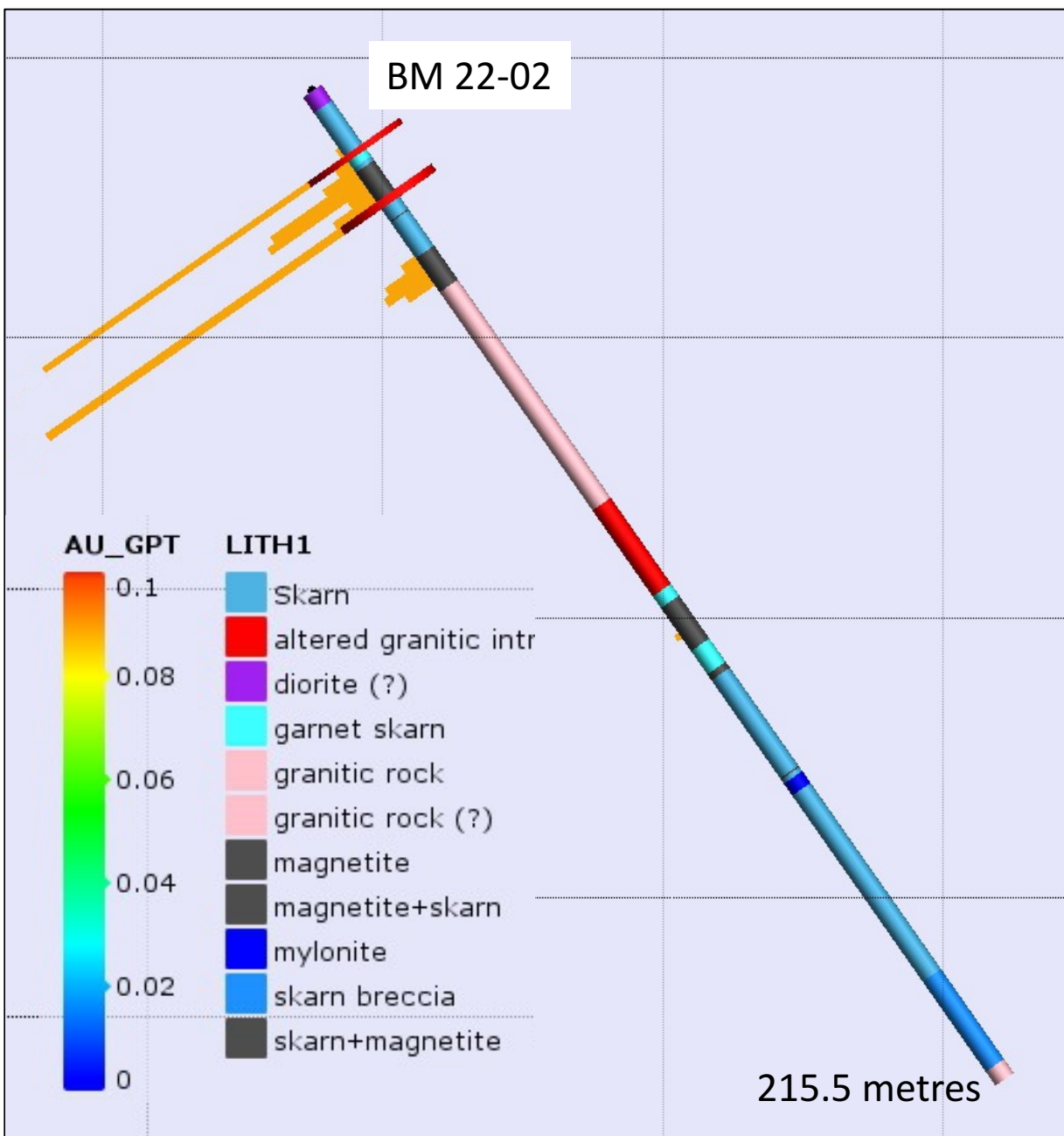
- 5.17 g/t / 6m
- 3.5 g/t / 1.2m
- 1.4 g/t / 8.2m
- 2.4 g/t / 1.5m



RESULTS FOR BM 22-02

HIGH-GRADE GOLD

Zone	From (m)	To (m)	Interval (m)	Gold (g/t)
Upper	12.8	14	1.2	3.8
Magnetite	14	22.8	8.8	0.2
Lower	22.8	24.4	1.6	4.0



LAMEFOOT SOUTH
NEW DISCOVERY

4.5 m of 10.5 g/t gold

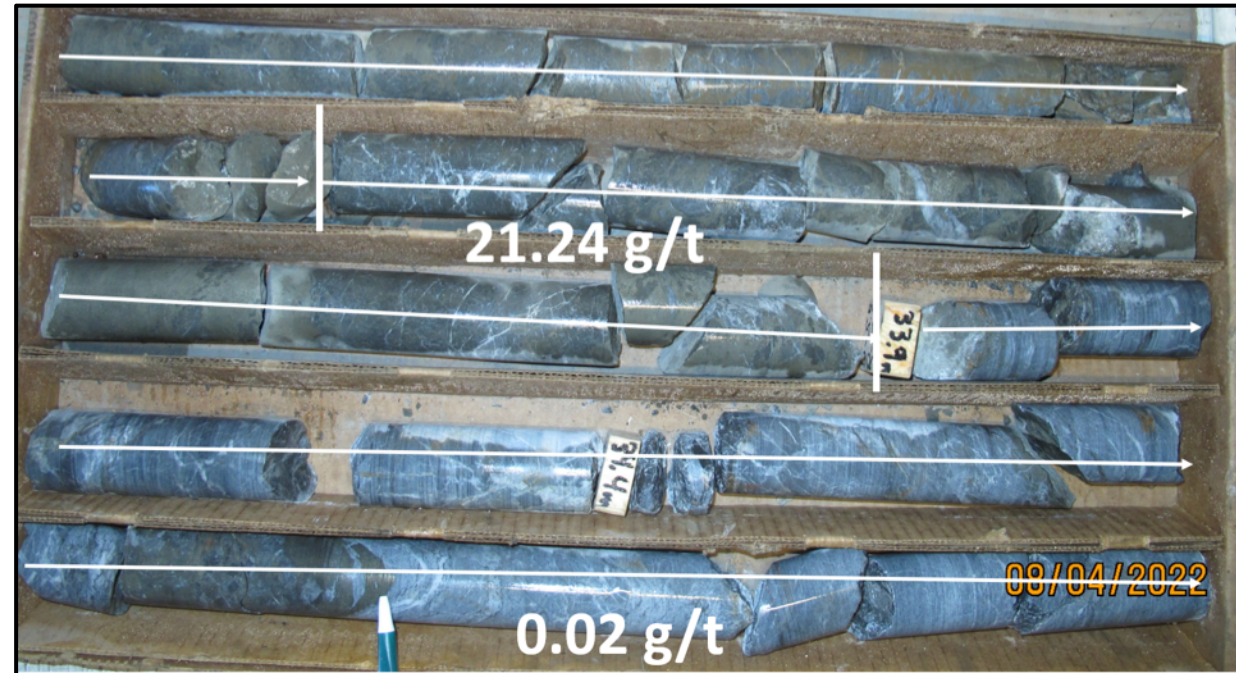
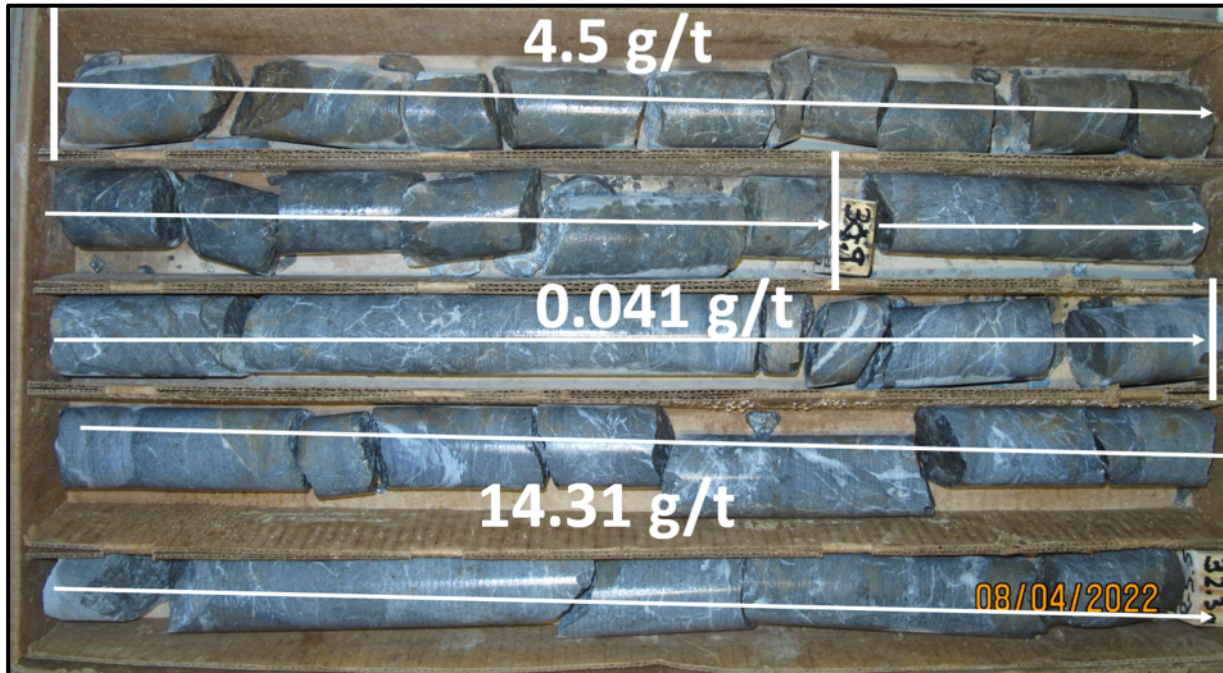
FOLLOW UP DRILLING COMPLETE
ASSAYS PENDING



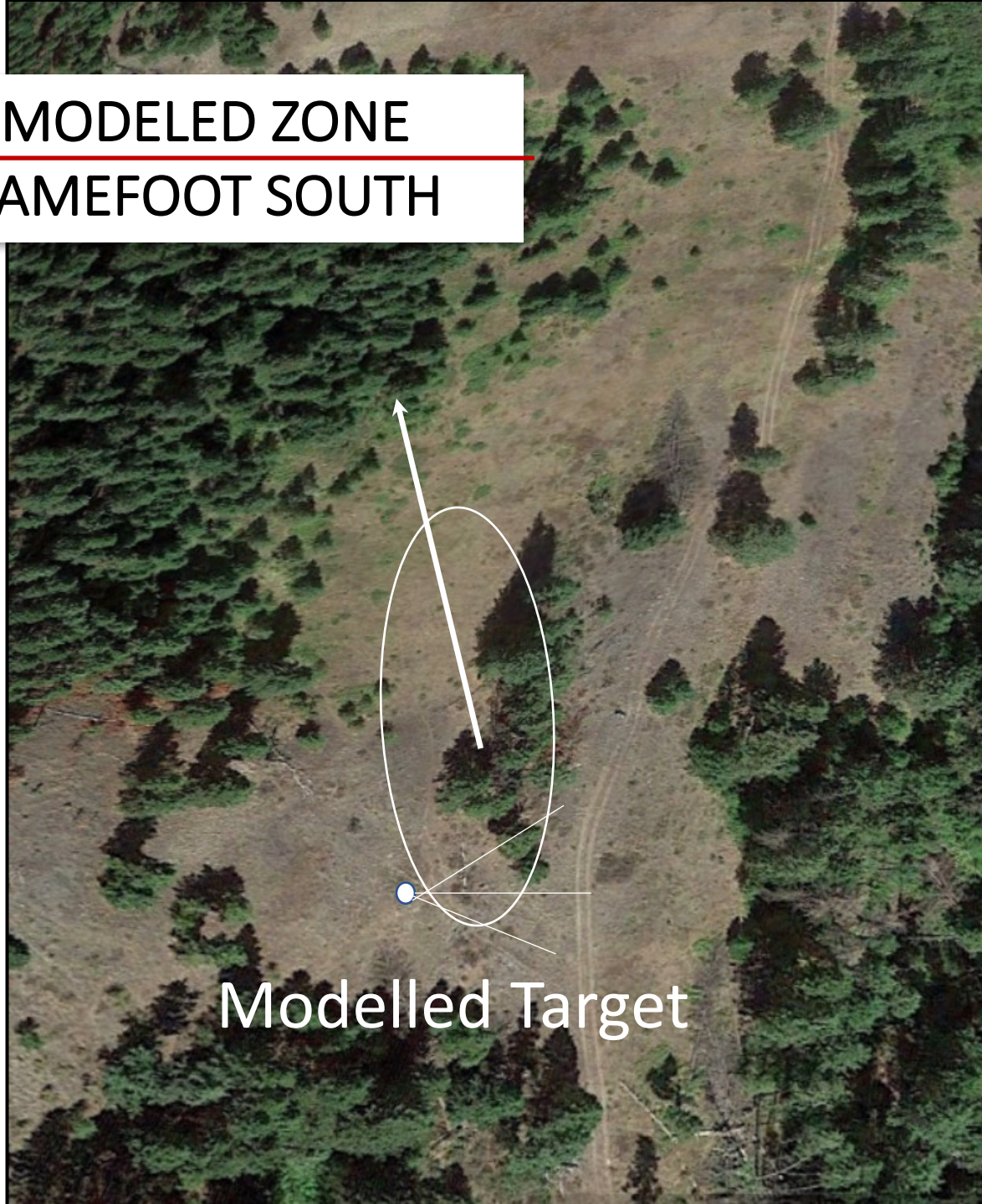
MINERALIZATION LAMEFOOT SOUTH

From ^(m)	To ^(m)	Interval	Au (g/t)
29.57	33.99	4.4	10.51
29.57	30.94	1.37	4.54
31.70	32.92	1.22	14.31
32.92	33.99	1.07	21.24

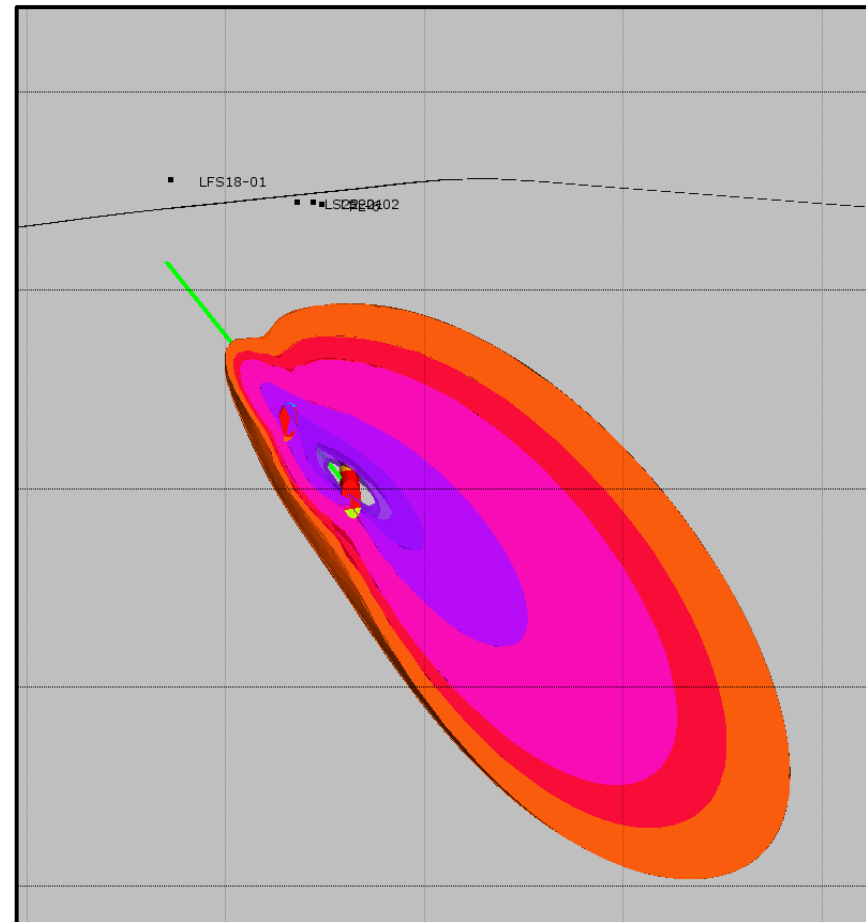
} 2.30m
@
17.5 g/t Au



**MODELED ZONE
LAMEFOOT SOUTH**



Modelled Target



Modelled X-section

LAMEFOOT SOUTH PROXIMAL TO MINE

NEW DISCOVERY

4.5m @10.5 g/t Au

500 M FROM LAMEFOOT MINE

~1M oz at 8-10 g/t gold

5 FOLLOW-UP HOLES COMPLETE

ASSAYS PENDING

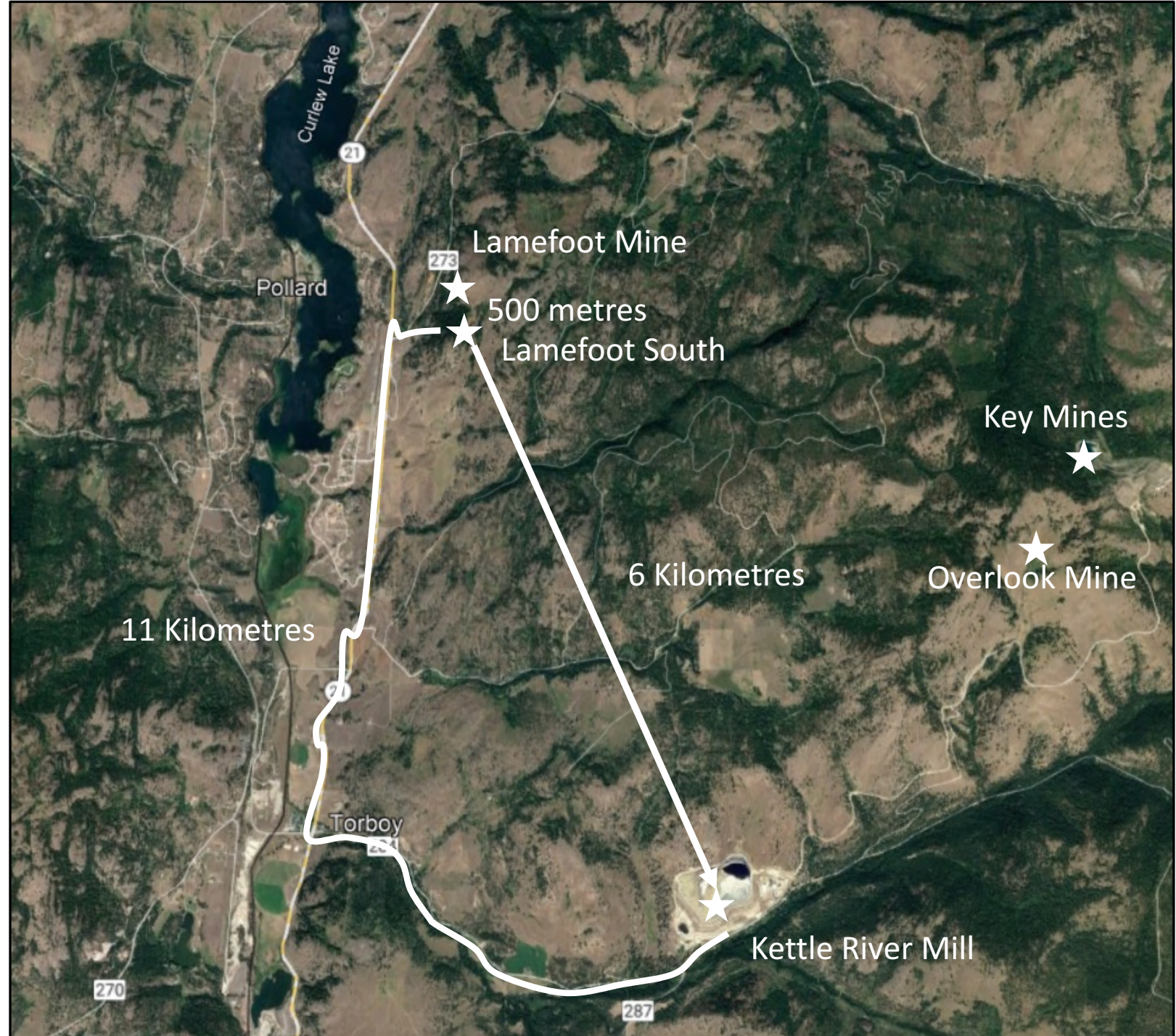


INFRASTRUCTURE LAMEFOOT SOUTH

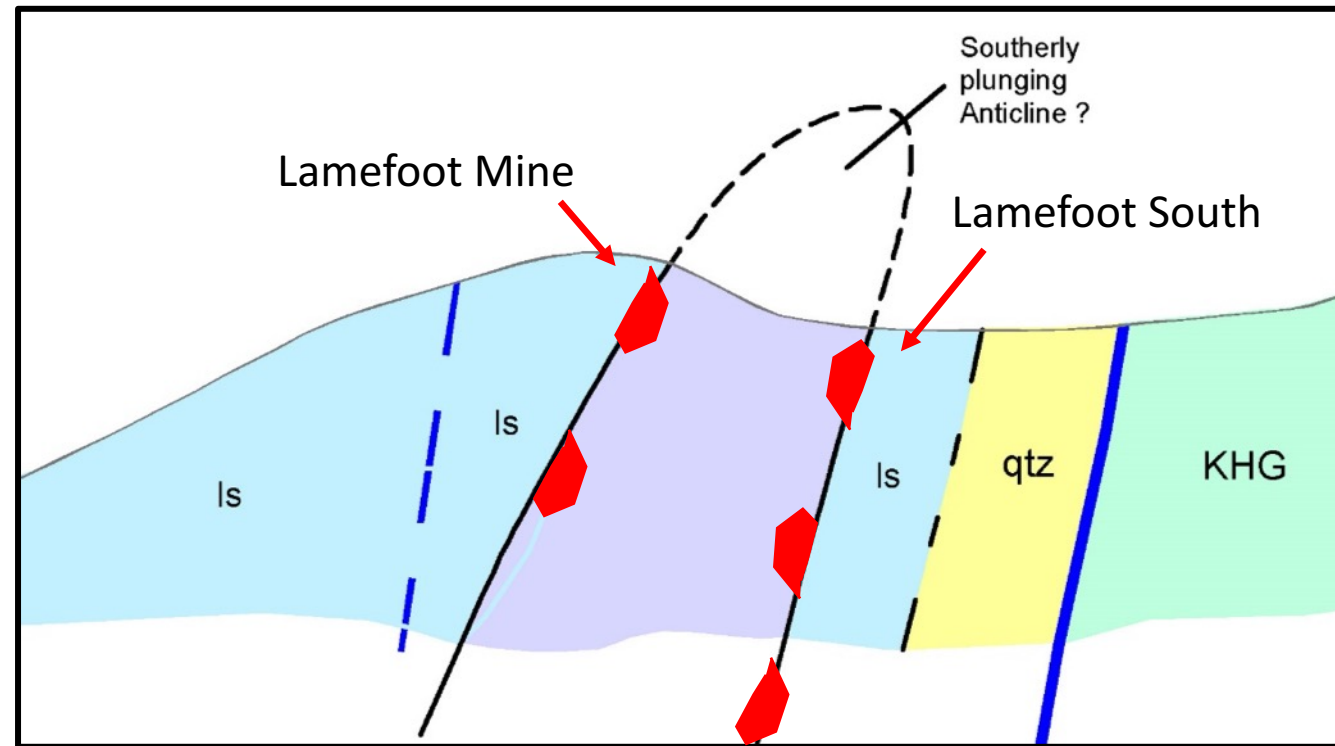
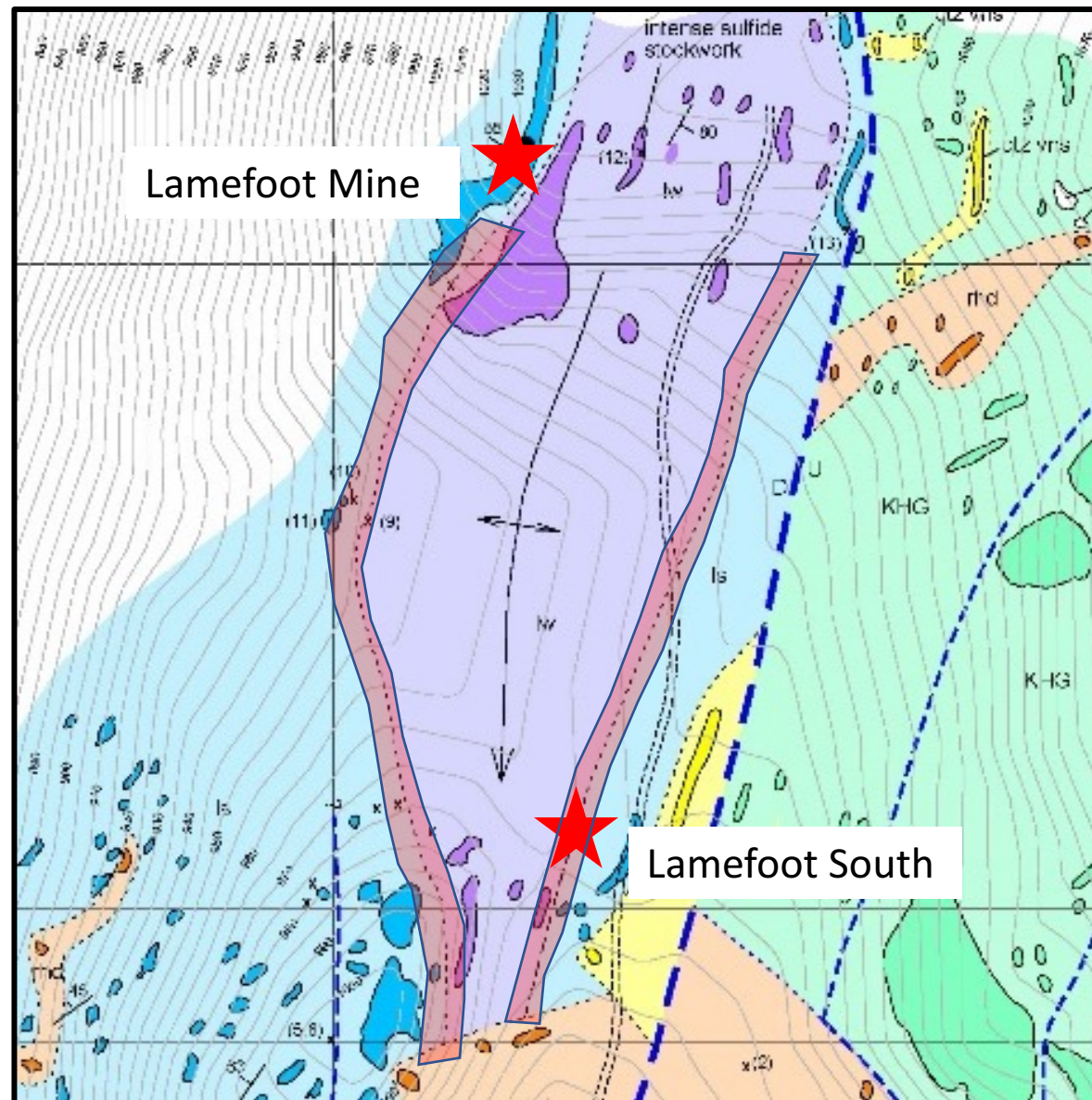
ALONG HIGHWAY 21

6 KM FROM KETTLE RIVER MILL

11 KM BY EXISTING ROADS

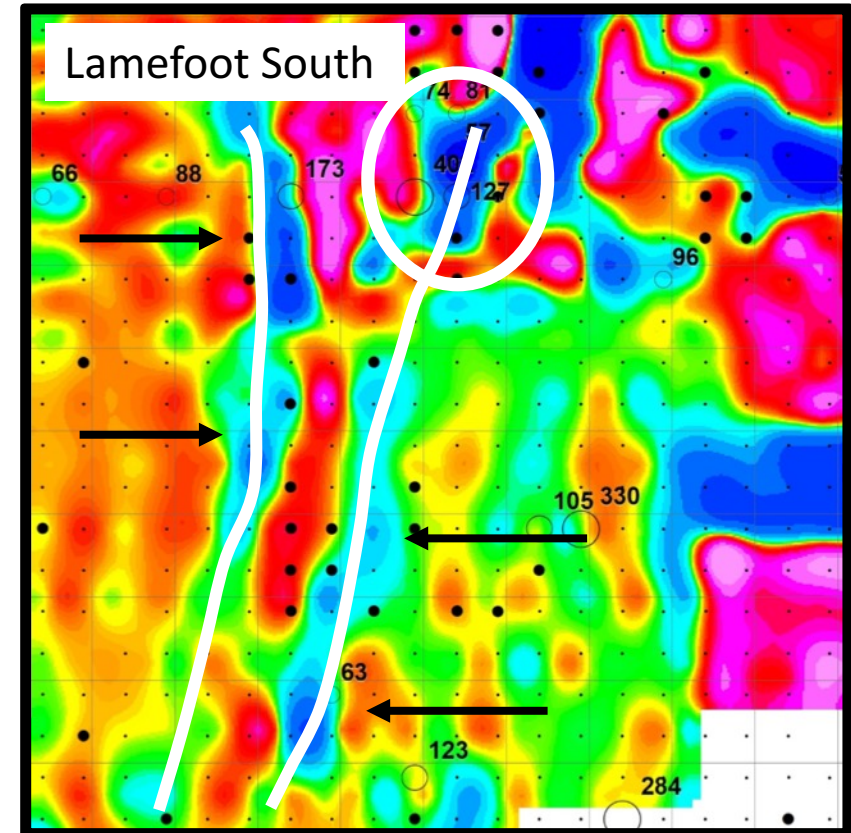
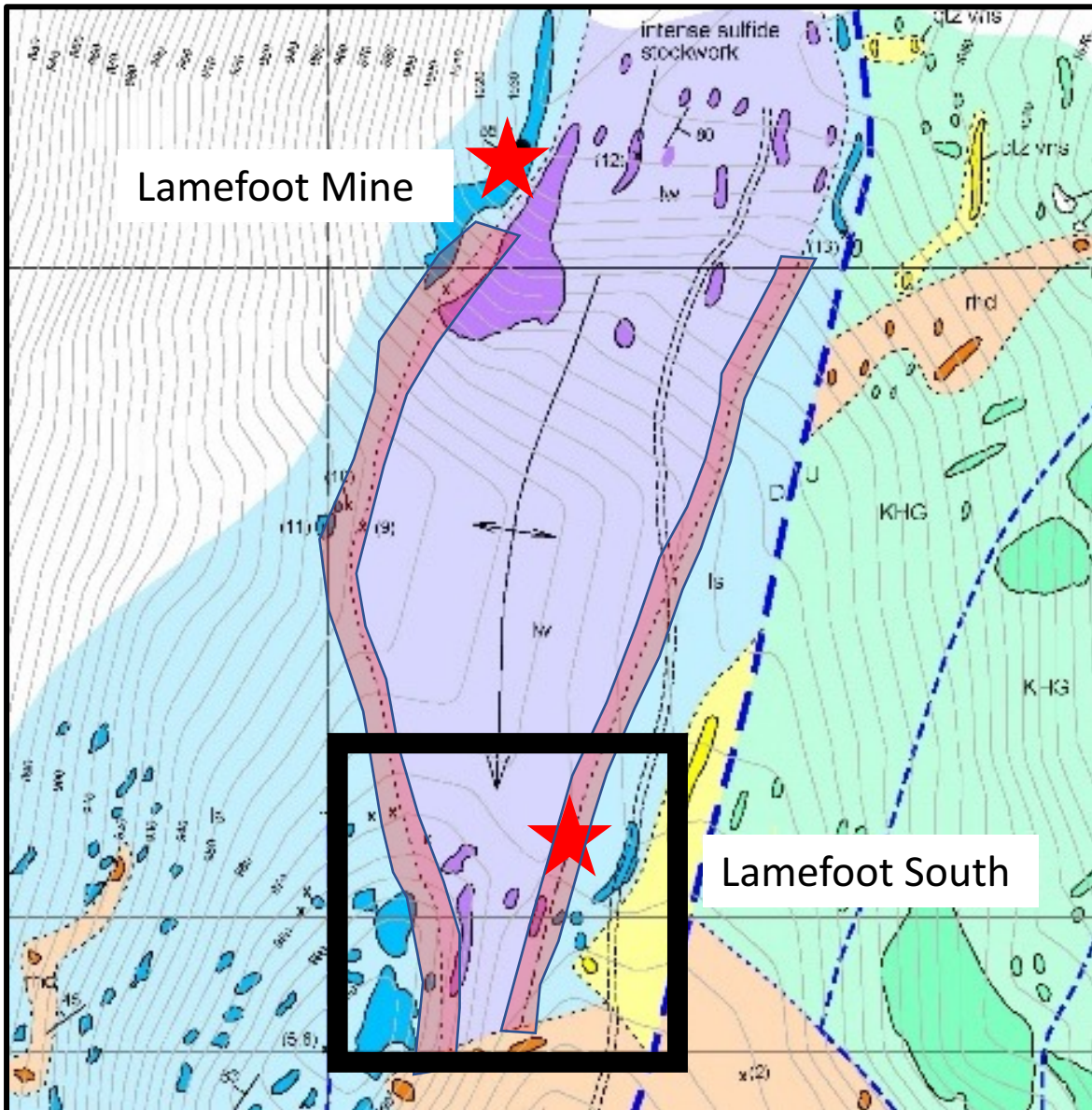


GEOLOGICAL ADVANTAGE LAMEFOOT SOUTH



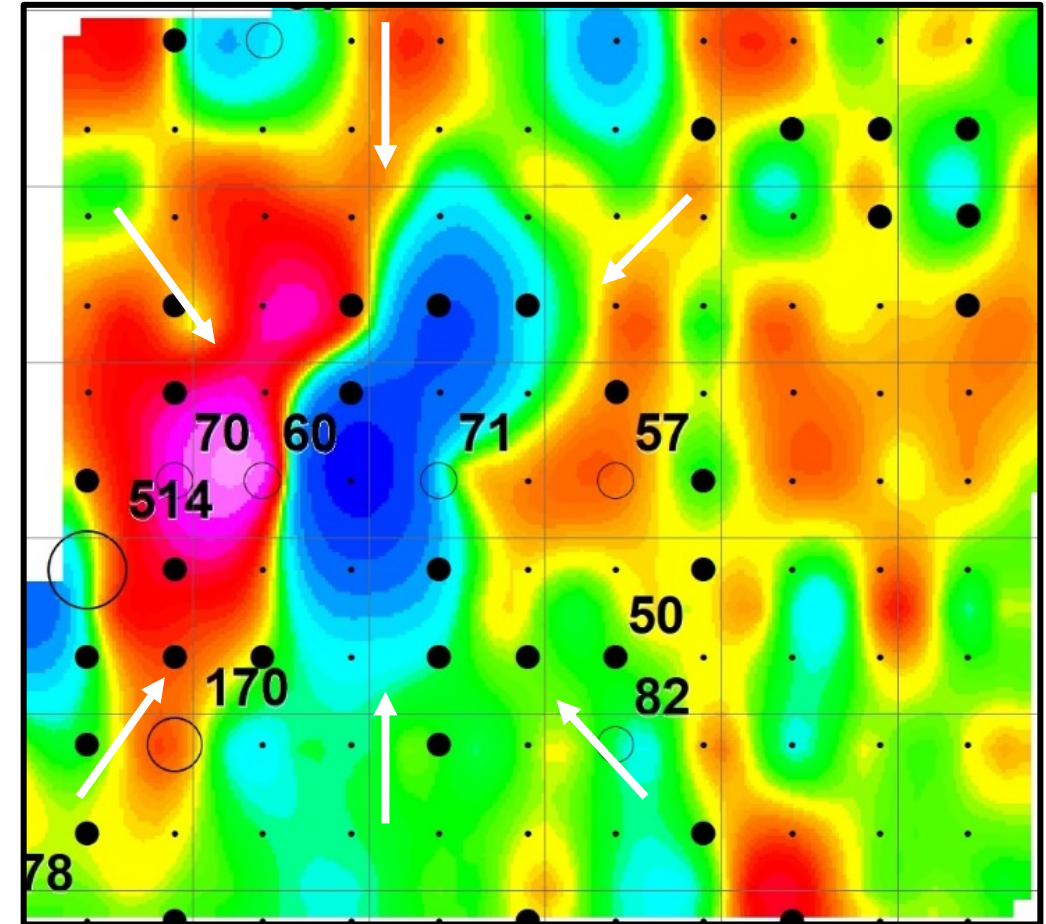
X-SECTION

GEOLOGICAL ADVANTAGE LAMEFOOT SOUTH



LAMEFOOT SOUTH NUMEROUS TARGETS SIZE POTENTIAL

- NEW DISCOVERY OF HIGH-GRADE GOLD
- DETERMINE ORIENTATION OF MINERALIZATION
- WELL DEFINED TARGET SPECS
 - SP, SULFIDES, TRACE ELEMENTS
- NUMEROUS SIMILAR NEARBY TARGETS TO TEST

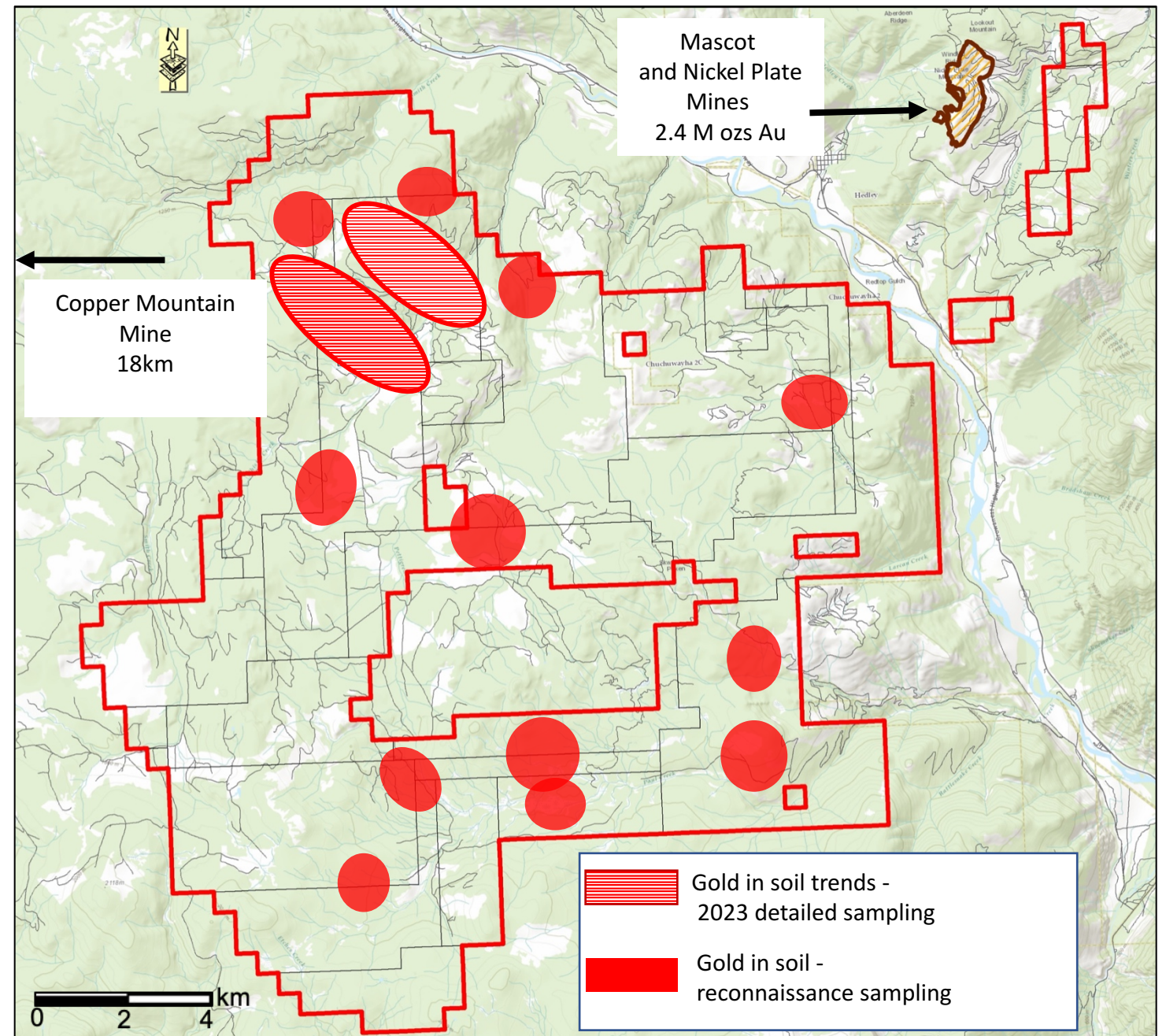


SOUTH HEDLEY PROJECT HEDLEY, BC CANADA

PROJECT GENERATION – COPPER - GOLD

- 5 KM SOUTH OF THE MASCOT AND NICKEL PLATE GOLD MINES AND 18 KM EAST OF COPPER MOUNTAIN MINE
- MORE THAN 21,000 HECTARES
- ASSAYS FOR COPPER AND OTHER ELEMENTS PENDING
- NUMEROUS ANOMALIES FOR FOLLOW UP

VARIOUS OPTIONS WILL BE CONSIDERED FOR THE TARGET AREAS INCLUDING RETENTION OF 100% INTEREST BY ADAMERA, JOINT VENTURE OR CASH SALE.



ADAMERA HIGHLIGHTS 2023

- HIGH- GRADE GOLD DRILL RESULTS ON TWO PROJECTS
- FOLLOW-UP DRILLING LAMEFOOT SOUTH
- FOLLOW-UP DRILLING BUCKHORN 2.0
- NEW TARGETS FOR FOLLOW UP ON HEDLEY PROJECT IN BC



THE MANAGEMENT AND ADVISORS TEAM HAS SUCCESSFULLY TAKEN COMPANIES FROM PROJECT GENERATION TO PRODUCTION AND /OR ACQUISITION.

MANAGEMENT

Chairman of the Board
Yale Simpson

President and CEO
Mark Kolebaba

Chief Financial Officer
Mark T. Brown

DIRECTORS

Mark Jones
Christopher Herald
Bernard Kahlert
Alejandro Adams

ADVISORS

Peter Cooper
Graeme Currie
Cecil Bond

TSX-V	ADZ
Price	\$0.05
Shares Outstanding	222,772,928
Warrants	32,011,332
Options	15,040,000
Fully Diluted	269,824,260

Share Structure – March 2023

HEAD OFFICE

ADAMERA MINERALS CORP.
11TH FLOOR - 1111 MELVILLE ST.
VANCOUVER, BC
CANADA, V6E 3V6



LINKEDIN : [@ADAMERAMINERALS](#)

TWITTER: [ADZ_ADAMERA](#)

FACEBOOK: [Adamera Minerals](#)

Thank You

TSX-V: ADZ

OTC: DDNFF

EMAIL: INFO@ADAMERA.COM

PHONE: +1.604.689.2010

FAX: +1.604.484.7143

Forward Looking Statement

Information in this presentation may be forward looking. Forward looking information is subject to known and unknown risks, uncertainties and other factors, including potentially inaccurate assumptions, which may cause the actual results, performance or achievements to be materially different from the future results, performance or achievements expected or implied by the forward looking information which speaks only as of the date of this presentation. No invitation to purchase securities is being made. Project QP's are listed in the news release on the company's website. For more detailed information about the Company, please see our Annual Information form, Financial Statements, and other materials available from www.sedar.com.